



COMPANY PROFILE  
\\DRAINAGE  
\\CIVILS





Stormwater Management | Environmental Store Water Management | Permeable Paving | Inground & Above the Ground Power Units | Pipe Line  
Cctv | Structural Drainage | Assisted Assisted Manhole Covers

# 01\Who We Are



With 80 years of worldwide expertise as part of Burdens Group, WTB specializes in all aspects of construction materials, from design to installation.

Serving the GCC market for over 10 years, Wt Burden is a key partner, committed to helping Engineers, Specifiers, Developers, Consultants, Contractors shape the Middle East, from below to above the ground.

Representing leading companies from around the world, WTB is committed to providing unrivalled customer service, offering full design services and onsite inspection before, during, after installation.



## 02\What we do

**WT BURDEN**  
drainage&civils

- ✓ Environmental Storm Water Management
- ✓ Oil Separators
- ✓ Infiltration Tanks
- ✓ Assisted Manhole Access
- ✓ Power Units
- ✓ Pipe Line CCTV

**WT BURDEN**  
landscape

- ✓ Tree Anchoring
- ✓ Structural Soil Systems
- ✓ Tree Irrigation/ Aeration
- ✓ Soil Improvers
- ✓ Gabion Retaining Walls
- ✓ Capillary Breakers

**WT BURDEN**  
street furniture

- ✓ Benches
- ✓ Railing & Bollards
- ✓ Tree Grills
- ✓ Bicycle parking
- ✓ Planters
- ✓ Shade Structures
- ✓ Bus & Tram Shelters
- ✓ Playground Equipment

✓ Green Walls

✓ Green Roofs





# 03\Civils & Drainage

Our expertise encompasses

## 03.1\STORMWATER MANAGEMENT

03.1.a\Arch Infiltration/Attenuation Tanks

03.1.b\Geocellular Infiltration Tanks

03.1.c\Oil Separators

03.1.d\Hydrodynamic Separators

03.1.e\Filter Media

03.1.f\Vortex Flow Control Device

## 03.2\PERMEABLE PAVING

## 3.3\POWER UNITS

03.3.a\In Ground

03.3.b\Above the Ground

## 03.4\PIPE LINE CCTV

## 03.5\STRUCTURAL DRAINAGE

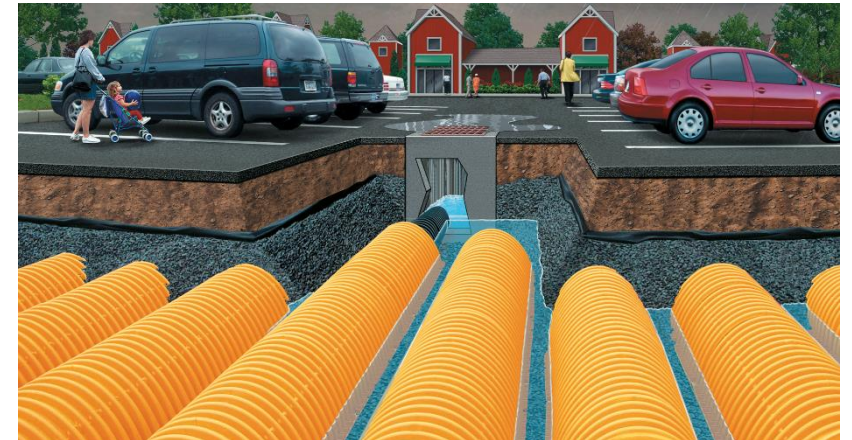
## 3.6\ASSISTED MANHOLE

03.6.a\Hinged Steel Assisted Manhole Access

03.6.b\Recessed Covers



## 03.1.a\StormWater Mgt ARCH INFILTRATION/ATTENUATION TANKS





## 03.1.a\StormWater Mgt

### ARCH INFILTRATION/ATTENUATION TANKS

- ✓ Large capacity that **fits very tight footprints.**
- ✓ **A Cost effective solution.**
- ✓ **Simple and quick installation**
- ✓ Provides the **strength** of concrete vaults at a very competitive price.
- ✓ The robust **continuous true elliptical arch design** effectively transfers loads to the surrounding backfill, providing long-term safety factors.
- ✓ **Designed in accordance with the AASHTO, LRFD and Bridge Design Specifications**
- ✓ **Polypropylene and polyethylene** resins tested using ASTM standards to ensure long and short-term structural properties.
- ✓ **Injection moulded** for uniform wall thickness and repeatable quality.
- ✓ Third party **tested and patented Isolator Row** reduces maintenance, water quality and long term performance.
- ✓ **Open chamber design** requiring only one chamber model to construct each row assuring ease of construction and no repeating end walls to obstruct access or flow





## 03.1.b\StormWater Mgt

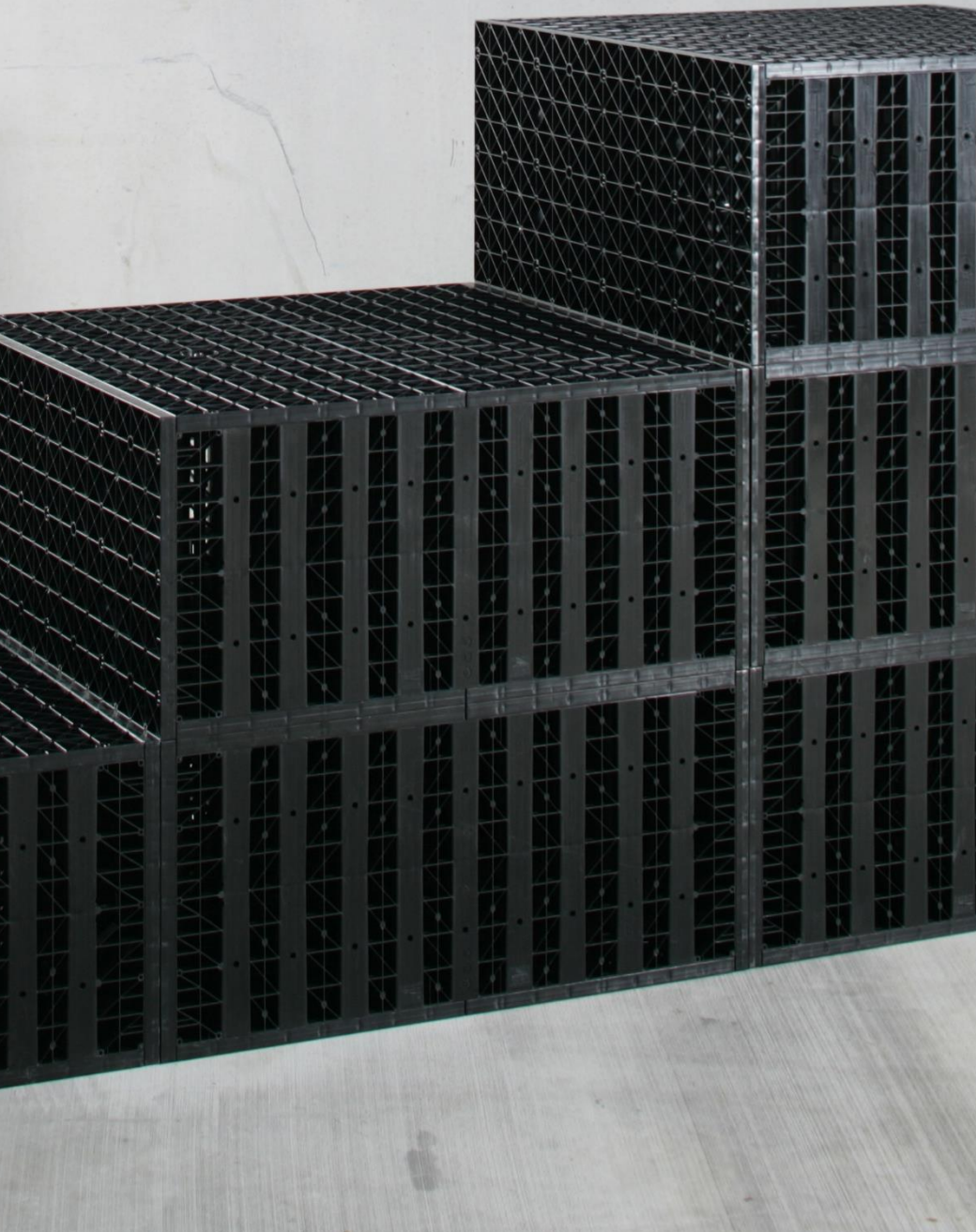
### GEOCELLULAR INFILTRATION TANKS





## 03.1.b\StormWater Mgt

### GEOCELLULAR INFILTRATION TANKS

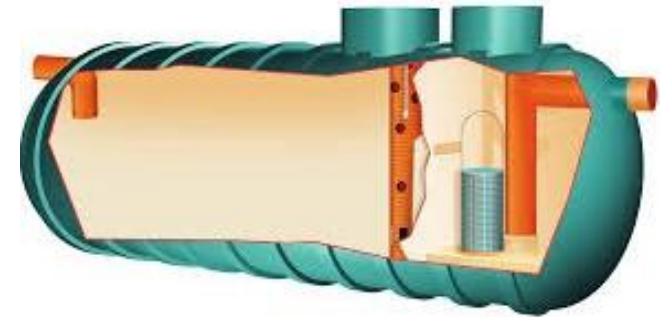


- ✓ Allow **subsurface water retention and infiltration**.
- ✓ Combines **high storage capacity** with stability for underground use.
- ✓ Every element made up of **statically calculated grids** completely enclosed by geotextile.
- ✓ The single tanks may be positioned according to the space conditions.
- ✓ This combination **allows for rainwater reservoirs** to be created where atmospheric water be first collected and then drained away or piped.



## 03.1.c\StormWater Mng

### OIL SEPARATORS

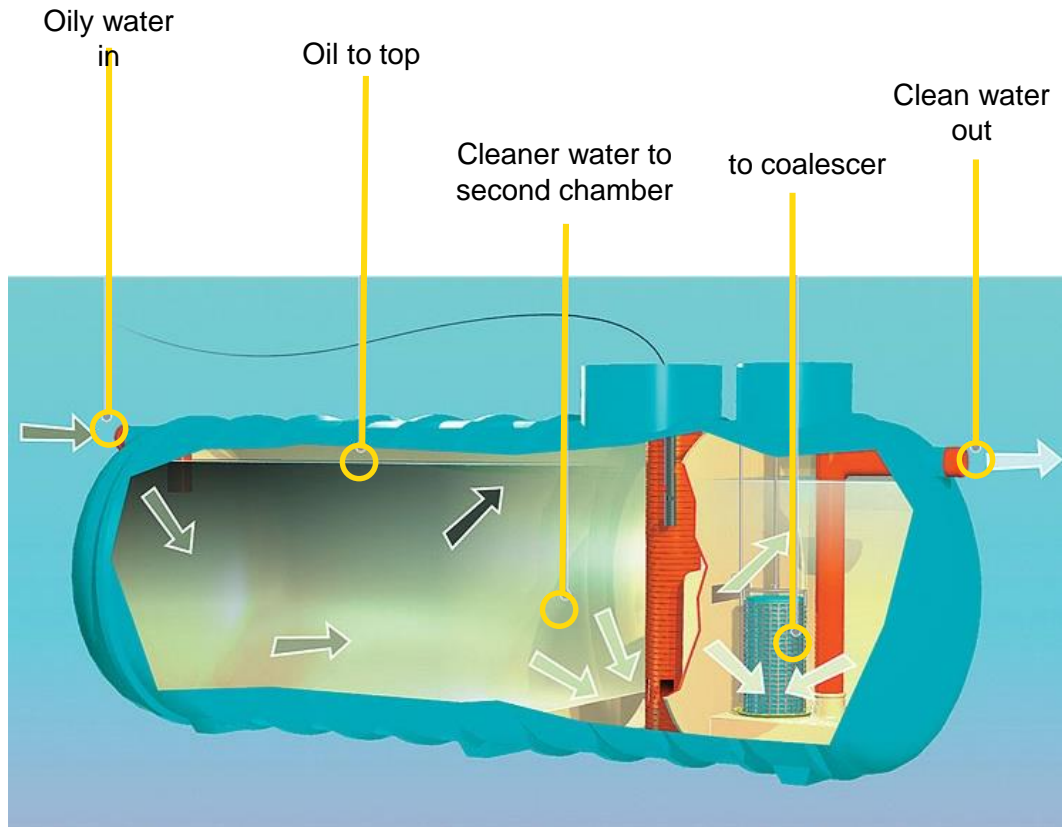


**SPEL**



## 03.1.c\StormWater Mng

### OIL SEPARATORS

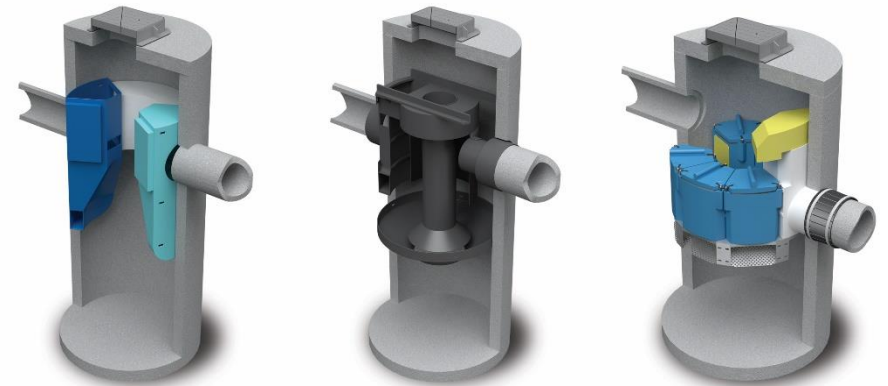


- ✓ Removes hydrocarbons from surface water run off to less than 5ppm (5mg/l).
- ✓ Light and **easy to install**.
- ✓ Class I and Class II designs.
- ✓ Inclusive of **silt storage volume**.
- ✓ **Fitted inlet/outlet connectors**.
- ✓ Vent points within necks.
- ✓ **Oil alarm system available** (required by EN 858-1 and PPG3).
- ✓ **Extension access shafts** for deep inverts.
- ✓ **Maintenance from ground level**.
- ✓ GRP or rotomoulded construction (subject to model).



## 03.1.d\Stormwater Mgt

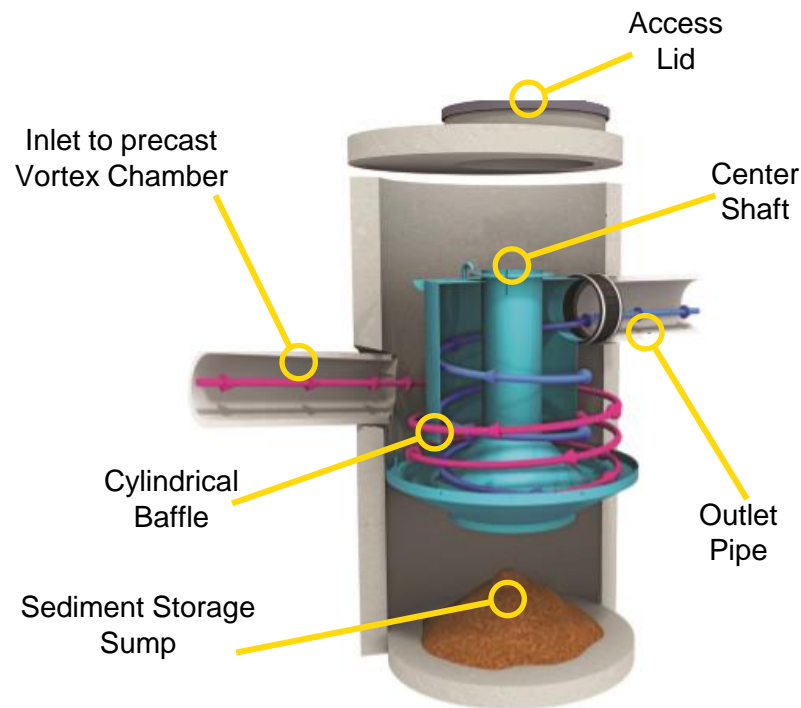
### HYDRODYNAMIC SEPARATORS & UP-FLOW FILTERS





## 03.1.d\Stormwater Mgt

### HYDRODYNAMIC SEPARATORS & UP-FLOW FILTERS

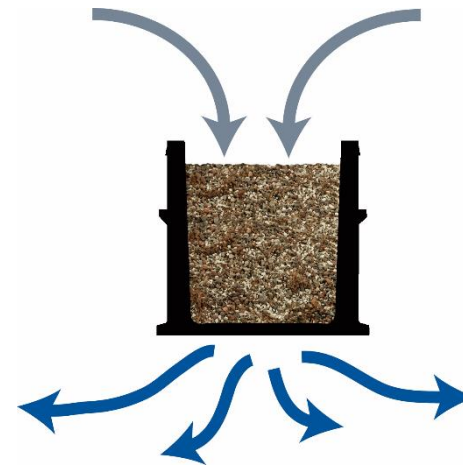
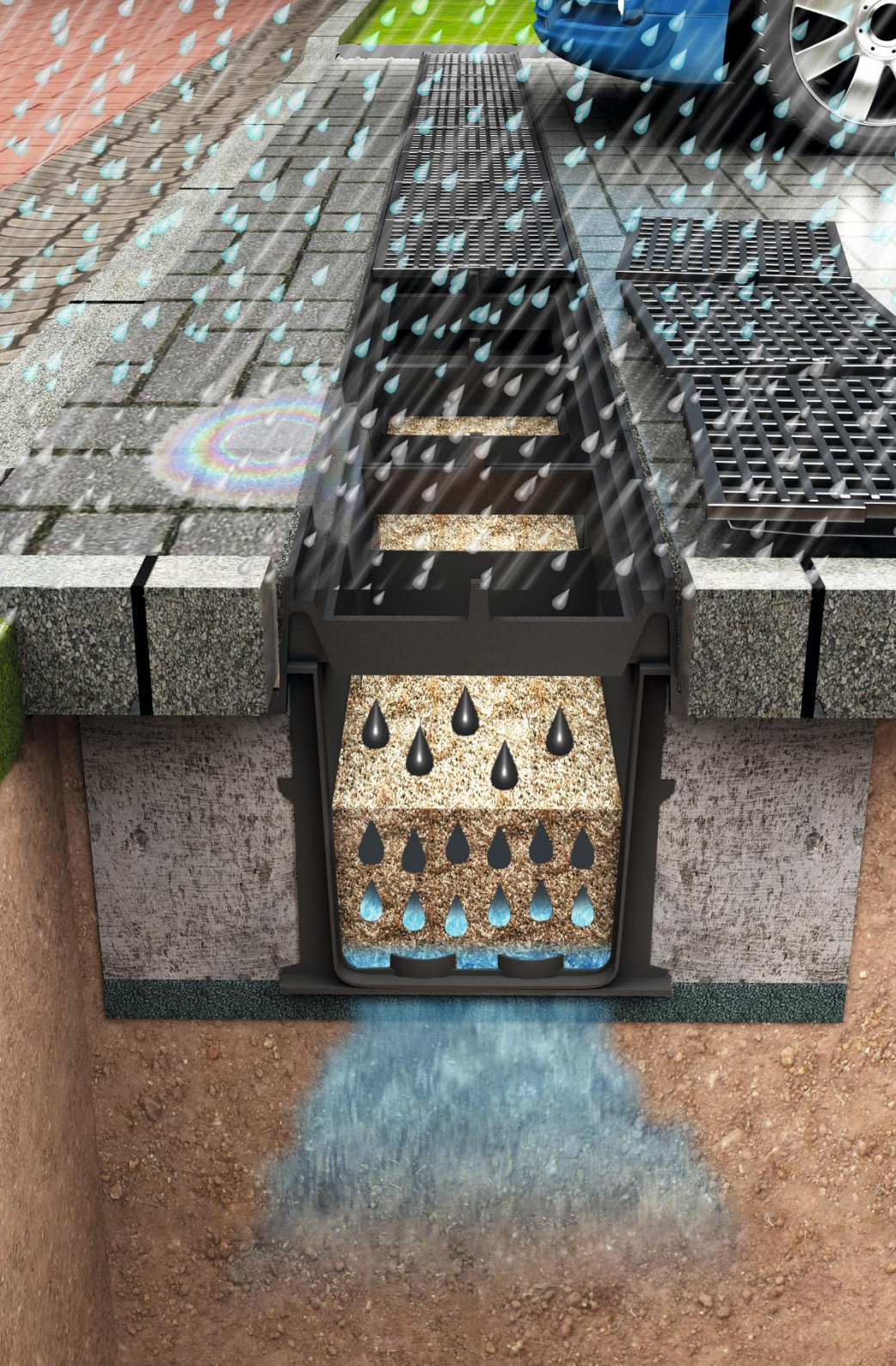


- ✓ **Most efficient Silt** separator available.
- ✓ **Lower capital cost** than other devices
- ✓ Special internal components **maximize pollutant capture and minimize footprint, headloss and washout.**
- ✓ **Verified** through nationally recognized programs
- ✓ Direct access to pollutants stored in the sump from the surface, and **no man-entry required.**
- ✓ **Captures and retains a wide range of TSS particles**
- ✓ High peak treatment flow rates
- ✓ Variable inlet/outlet angles for ease of site layout
- ✓ **Low maintenance requirements**



## 03.1.e\StormWater Mgt

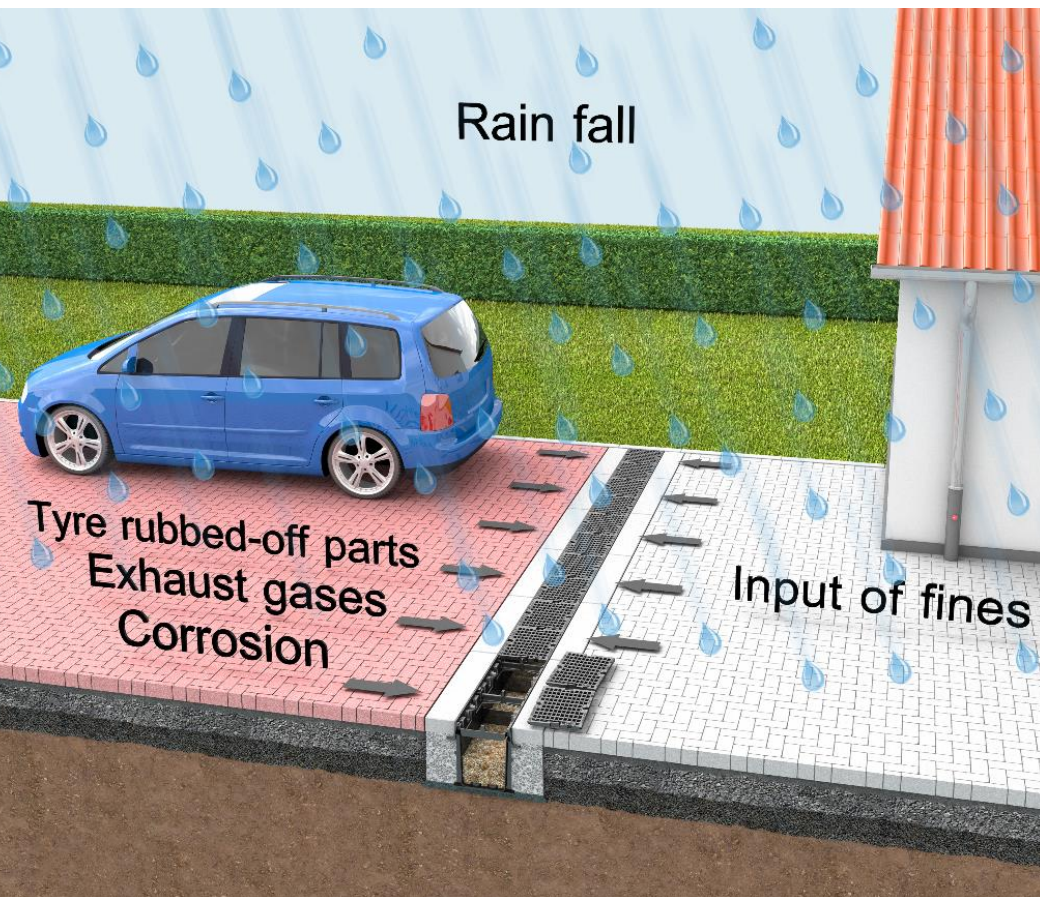
### **FILTER MEDIA**





## 03.1.e\StormWater Mgt

### **FILTER MEDIA**

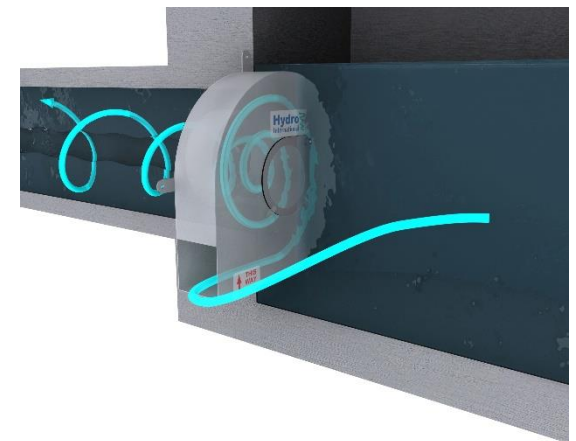


- ✓ Remove heavy metals and hydrocarbons from surface run-off.
- ✓ Is approved according to DIBt Z-84.2-1 and **complies with the requirements** of the DWA A-138 rules concerning contaminated surface water.
- ✓ **Space saving**, due to trafficable channel
- ✓ Heavy metals will be stored in a defined space **allowing for a quicker and simpler exchange**
- ✓ Planning reliability both for the entrepreneur and the purchaser thanks to a defined substrate (cleaning performance, permeability etc.)
- ✓ **Service life of 15 to 20 years** (depending on stress)



## 03.1.f\StormWater Mgt

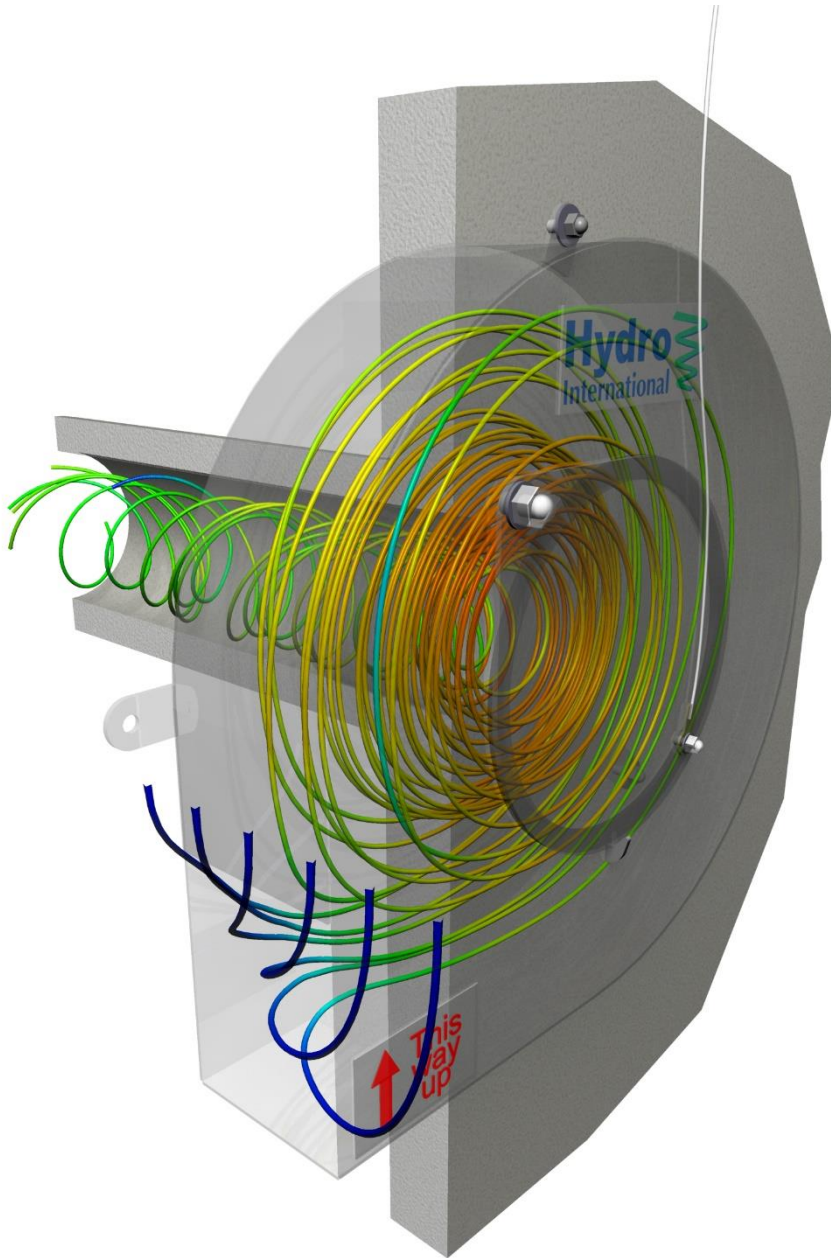
### VORTEX FLOW CONTROL DEVICE



## 03.1.f\StormWater Mgt

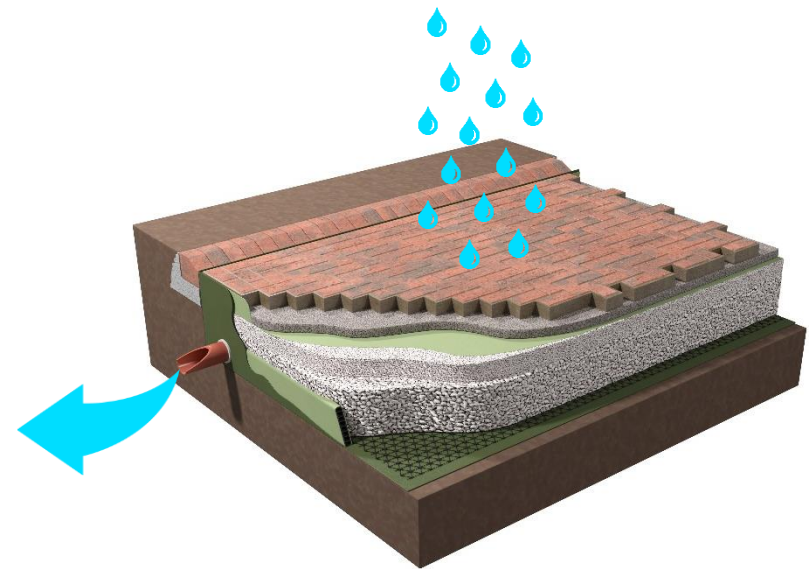
### VORTEX FLOW CONTROL DEVICE

- ✓ When used as an outlet flow control, **reduces storage requirements by up to 30%**
- ✓ When used for runoff volume reduction and green infrastructure schemes, **controls more flow than an equivalent orifice for greater on-site detention/retention capacities**
- ✓ **Up to 50% savings** in project costs
- ✓ **Self-activating** with no moving parts or power requirements
- ✓ **Area of opening is 3-6 times larger** than the equivalent orifice
- ✓ **Virtually maintenance free**
- ✓ **Performance proven** with 17,000 installations worldwide

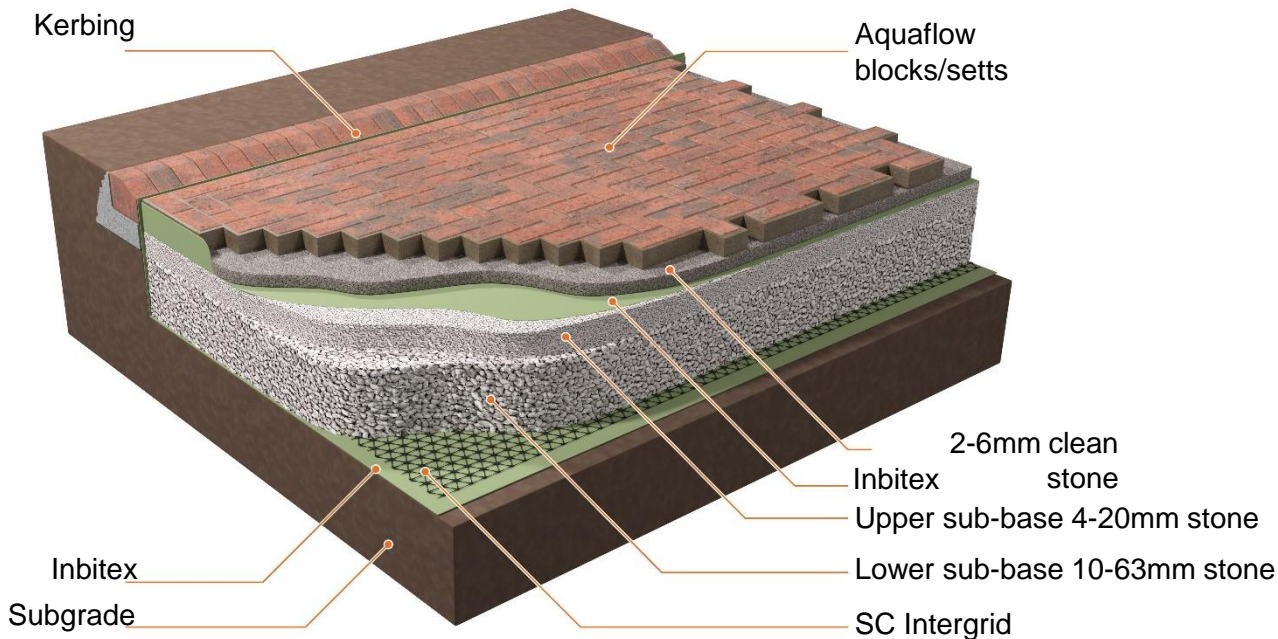




## 03.2\Permeable Paving



## 03.2\Permeable Paving



- ✓ **Clean and controlled water discharge:** this system allows drainage through vertical channels and will let water through the surface at a rate of round 9,000 litres per square metre per hour.
- ✓ **High quality.**
- ✓ **Choice of colours, types and finishes.**
- ✓ **Products suitable for all commercial and domestic applications.**
- ✓ **Manufactured in accordance with BS EN 1338:2003.**
- ✓ **BBA certification.**
- ✓ **Cost effective** and sustainable solution.

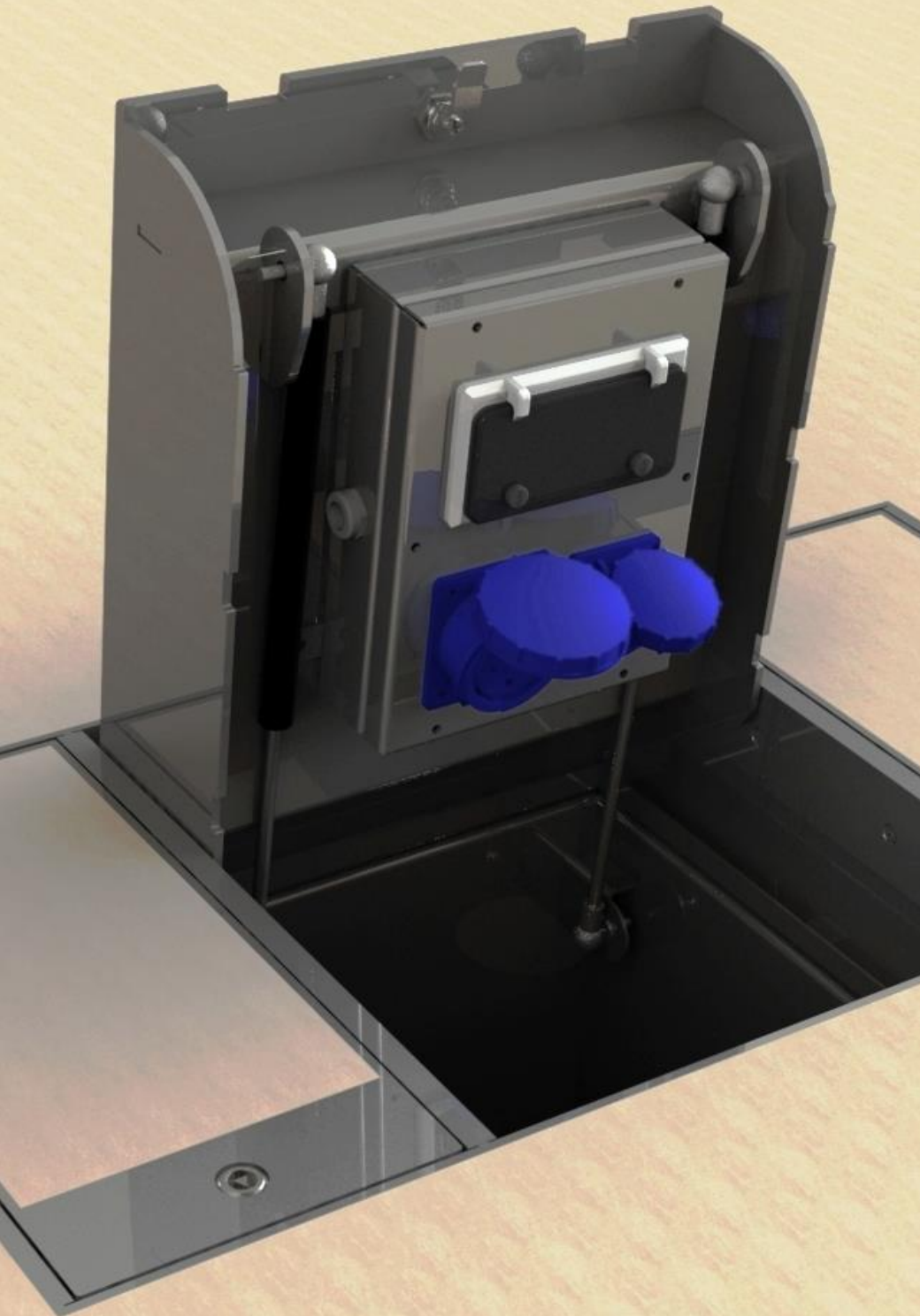


## 03.3.a Power Units IN GROUND





## 03.3.a Power Units IN GROUND



- ✓ Excellent for trading areas, open air areas with events and exhibitions **where temporary power is required.**
- ✓ 4 standard IP67 rated sockets to **ensure the highest level of safety.**
- ✓ For additional safety the lids may be closed during operation. The hinged recessed cover ensures the units are unobtrusive when not in use.
- ✓ Manufactured **in accordance with FACTA and BS EN124 standards.**
- ✓ The covers are **suitable for all types of paving blocks** and are manufactured to meet required loads.
- ✓ Gas Rams.
- ✓ **Drain point with anti-rodent mesh.**
- ✓ **Galvanised version available.**
- ✓ Chequer plate tops available.



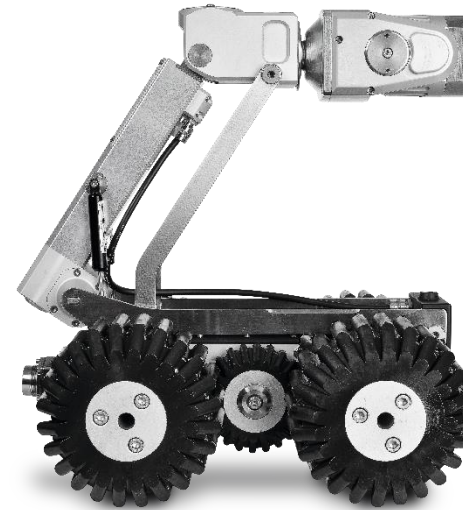
## 03.3.b\Power Units

**ABOVE THE GROUND**





## 03.4 Pipe Line CCTV





## 03.5\Structural Drainage





## 03.5\Structural Drainage

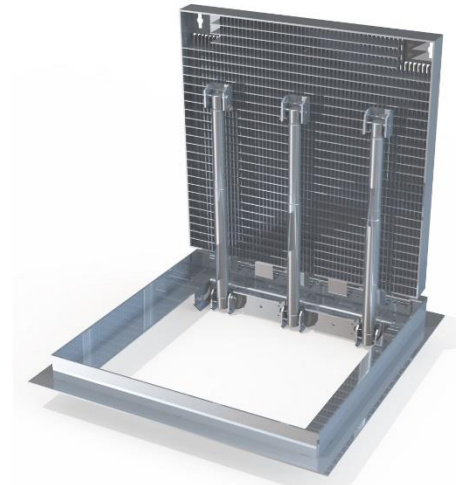
- ✓ **Horizontal or vertical** drainage applications.
- ✓ **Thinner drainage layers** when compared to traditional solutions.
- ✓ **Reduced deadload** on structure means thinner slabs are possible.
- ✓ High, factory constant flow capacity.
- ✓ **Rapid installation.**
- ✓ Enhances the performance of structural waterproofing by providing an additional barrier that **prevents the majority of the water reaching the liner.**
- ✓ **High CBR puncture resistance.**
- ✓ Allows use of lower specification backfill.
- ✓ **Reduced traffic volumes** when compared with stone.





## 03.6.a\Manhole Access

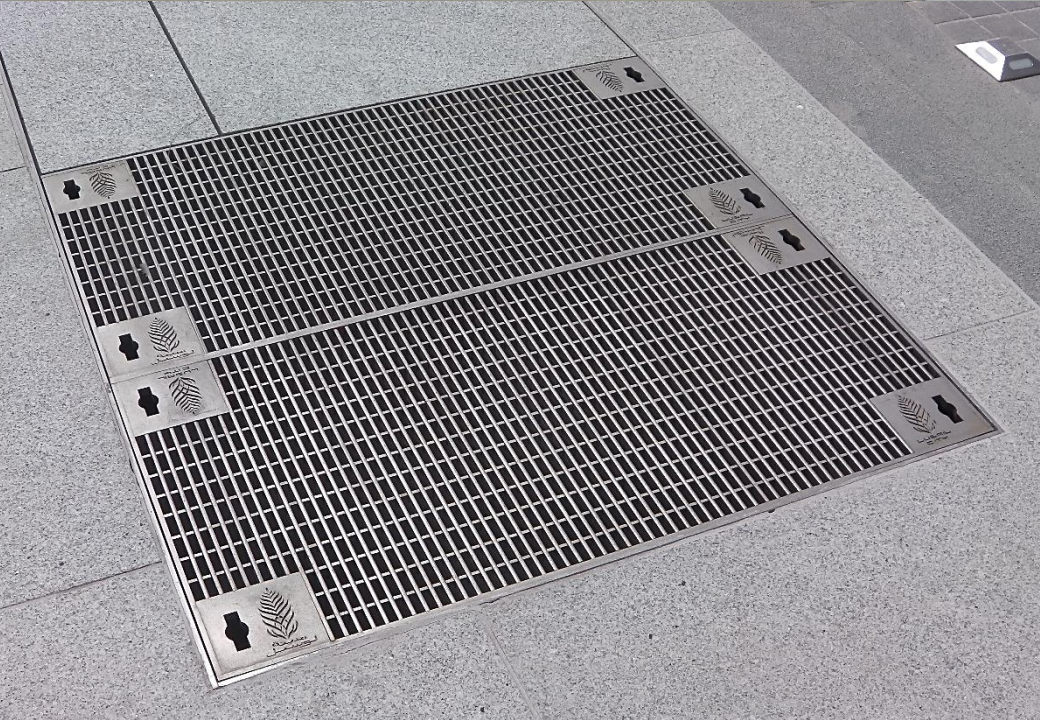
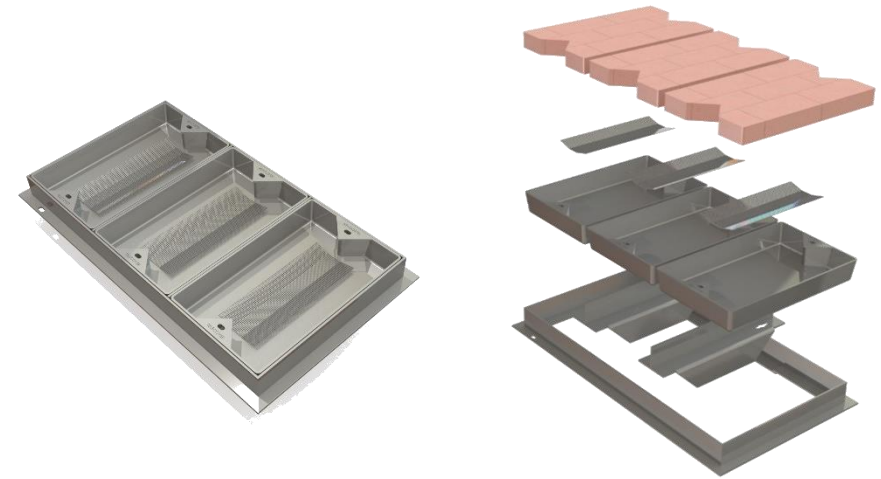
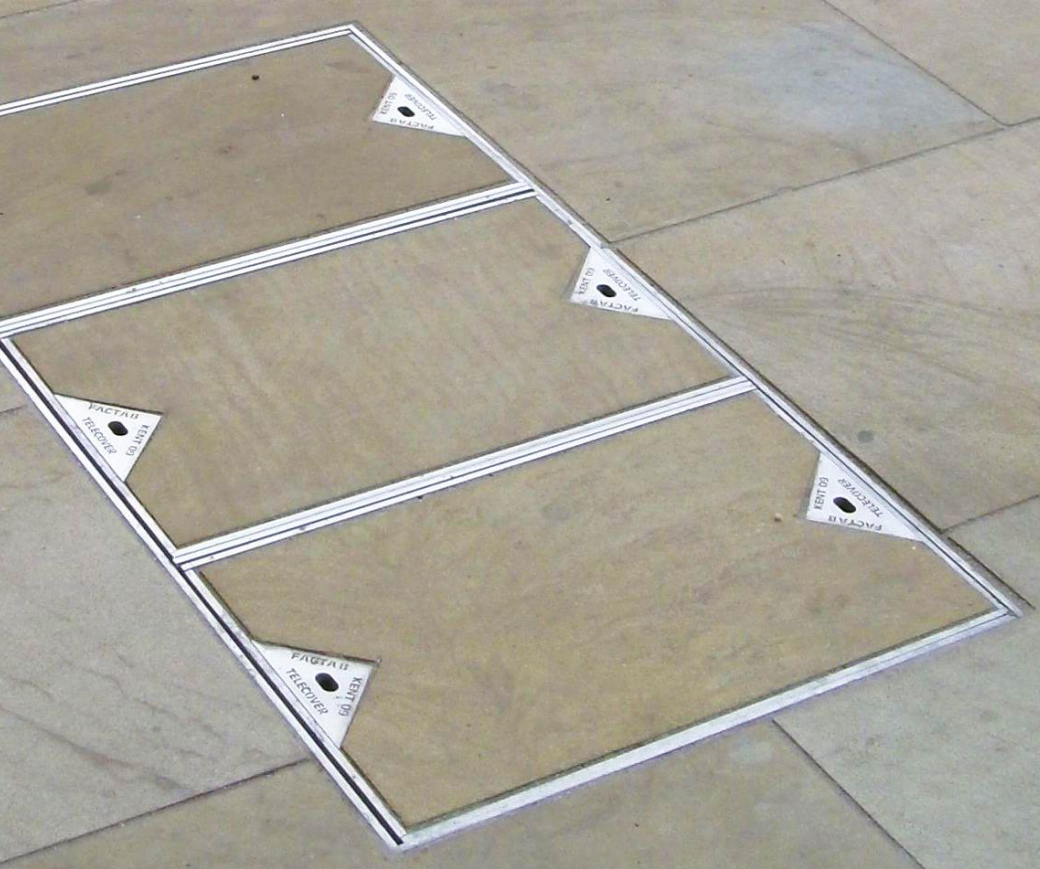
### HINGED STEEL ASSISTED MANHOLE ACCESS





## 03.6.b\Manhole Access

### RECESSED COVERS





# 04\Our Clients

مستشفى المفرق  
**Mafraq Hospital**



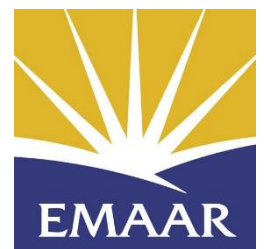
هيئة الطرق والمواصلات  
ROADS & TRANSPORT AUTHORITY



**meydan**

شركة التطوير والاستثمار السياحي  
**إي دي سي**

بلدية دبي  
DUBAI MUNICIPALITY



**dubai**  
Dubai Aluminium



مؤسسة قطر  
Qatar Foundation

**Sorouh**



United Arab Emirates – Sharjah Government  
SHARJAH CITY MUNICIPALITY



مركز دبي التجاري العالمي  
DUBAI WORLD TRADE CENTRE





Request Info  
**Street Furniture**

Request Info  
**Drainage & Civils**



Request Info  
**Landscape**

**WTBURDEN**  
drainage&civils landscape street furniture

**DUBAI**

Jebel Ali Free Zone  
PO Box 261378,  
Dubai (UAE)

**civils@wtburden.ae**

t. +971 4 8860 700 / f. +971 4 8860 701

**DOHA**

Office 102 - 1<sup>st</sup> Floor, Regus Building,  
D-Ring Road, PO Box32522,  
Doha (Qatar)

**civils@wtburden.ae**

t.+974 4423 1328 / f.+974 4423 1100

**www.wtburden.ae**